

summit

H O U S E

Waterloo Lane ▲ Chelmsford ▲ CM1 1YG

Refurbished city centre office building
with secure car parking



1,044 sq ft (97 sq m) – 9,160 sq ft (851 sq m)

**TO
LET**

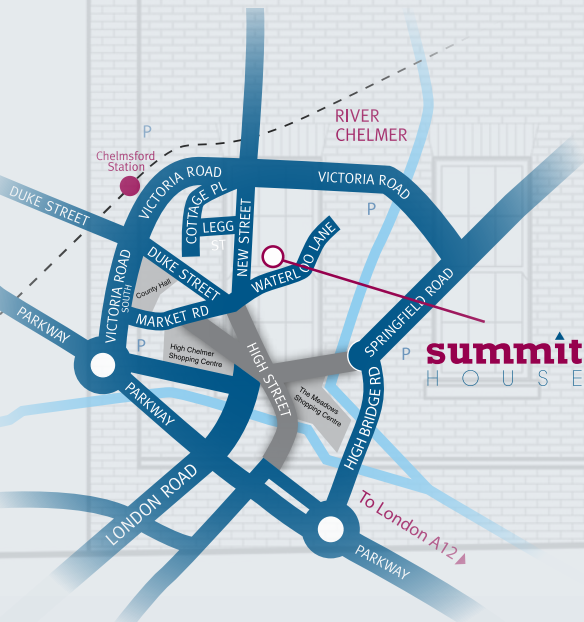
summit

Location

Summit House is located in the centre of Chelmsford close to the retail amenities of the High Street and the High Chelmer and Meadows shopping centres and within close proximity of the proposed new John Lewis store which will be located close by.

The building is also within ½ mile of Chelmsford Railway Station which provides a regular service to London Liverpool Street with an approximate journey time of 35 minutes.

Chelmsford benefits from excellent communications with the A12 giving direct access to the M25 – Junction 28 (within 12 miles). The M11 and Stansted Airport are also easily accessible.



Description

Summit House provides newly refurbished office accommodation on ground, first and second floors together with a private gated car park.

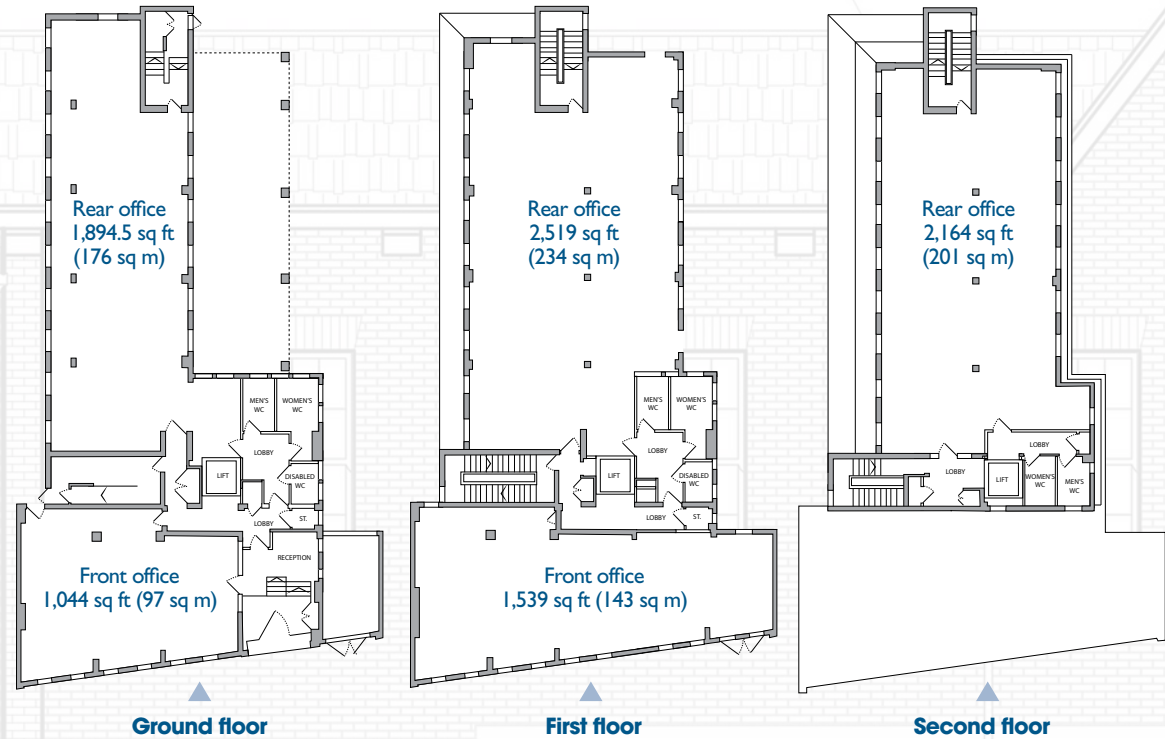
Specification

- ▲ Attractive glass entrance
- ▲ Gas central heating
- ▲ Air conditioning/air cooling
- ▲ Perimeter trunking
- ▲ 8 person passenger lift
- ▲ Suspended ceilings with recessed lighting
- ▲ Platform/stair lift to entrance foyer
- ▲ Male and female toilets on each floor
- ▲ Disabled facilities
- ▲ Secure car parking

Energy Performance Certificate

C73

Accommodation



Terms

The offices are available as a whole or in suites from 1,044 sq ft. Further details upon application.

Viewing

Appointments to view and further information can be obtained by contacting joint agents James Wills at Taylor and Company on 01245 495959 or jalw@taylorandcompany.co.uk and Terence Hair at Hair and Son on 01702 432255 or terencehair@hairandson.co.uk

Taylor and Company and Hair & Son for themselves and for the vendors or lessors of this property whose agents they are give notice that: (i) the particulars are set out as a general outline only for the guidance of intending purchasers or lessees and do not constitute, nor constitute part of, an offer or contract; (ii) all descriptions, dimensions, references to condition and necessary permissions for use and occupation and other details are given without responsibility and any intending purchasers or lessees should not rely on them as statements or representations of fact but must satisfy themselves by inspection or otherwise as to the correctness of each of them; (iii) unless otherwise stated all prices are quoted exclusive of Value Added Tax, any intending purchasers or lessees must satisfy themselves independently as to the incidence of VAT in respect of any transaction; (iv) no person in the employment of Taylor and Company and Hair and Son has any authority to make or give any representation or warranty whatever in relation to this property. October 2013

TAYLOR
AND COMPANY
01245 495959
www.taylorandcompany.co.uk

Hair & Son
01702 432255
www.hairandson.co.uk